

Database Development



Overview

- Two data repositories:
 - Descriptive: **governance** & education information
 - Quantitative: numerical data for education and stocks & flow
- 2 types of variable: **core** & **supplemental**
- 3 phase process based on data availability

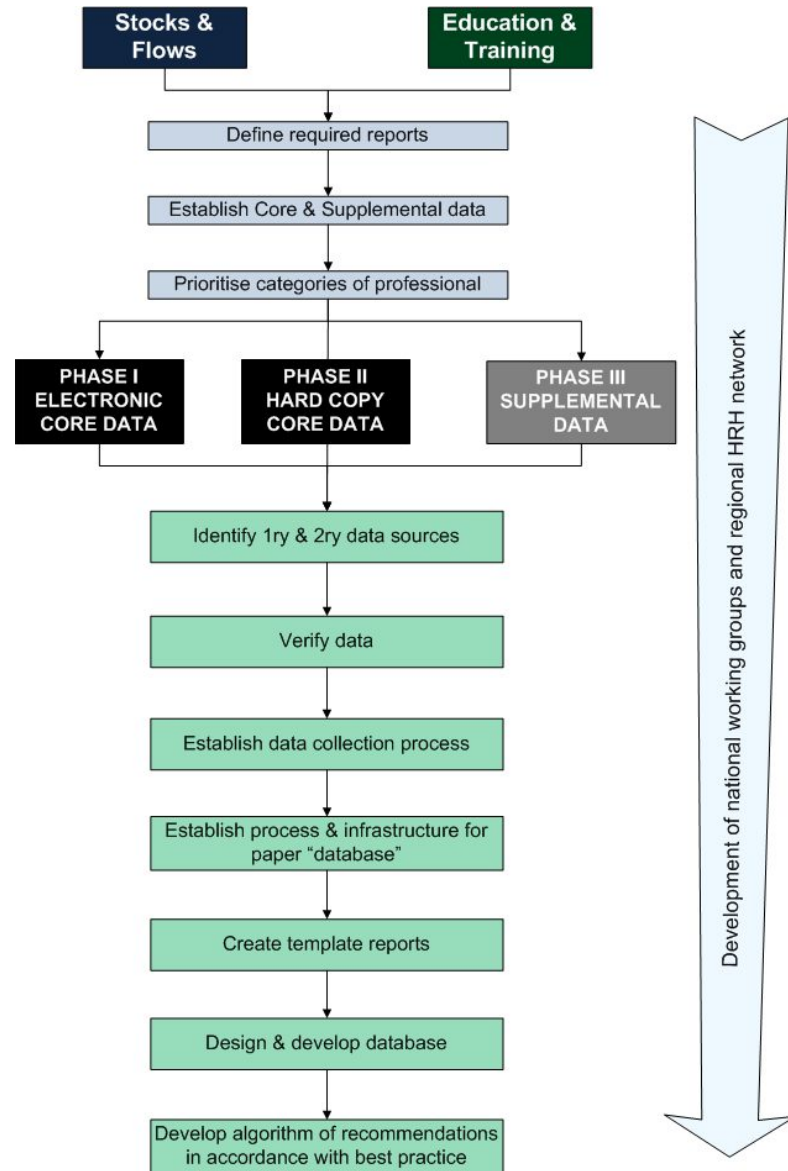
Core vs Supplemental

- Core data = data fundamental to the most basic requirements of an HRH database.
 - electronic - should be readily available and current e.g payroll or admission data from tertiary education institutions.
 - hard copy - Core data that is not available in an electronic format will be collected from hard copy.
- Supplemental = data that would strengthen any conclusions and recommendations based on the core data e.g. information from registration councils.

Three Phases

- Phase I – Core: Electronic data collection & database development
- Phase II – Core: Hard copy data collection & database development
- Phase III – Supplemental data collection & database development

Summary of process



Where do we start?

Option 1

- Each country develops their own BUT this option assumes the following are in place:
 - High level statistician/data manager with comprehensive experience of an analysis package e.g. SPSS
 - Ability to convert electronic and hard copy data into a format that can be imported into the database based on predefined algorithms
 - High quality data, with minimal errors etc.
 - Appropriately configured hardware and relevant software licenses
 - For countries with the above infrastructure a workshop would be held to provide training regarding establishing and maintaining the database using predefined algorithms.

•

Where do we start?

Option 2

- Electronic anonymised data to be sent (securely) to a central point for inputting into the database.
- Over time the capacity to perform the necessary functions to maintain the database would be developed in country.

Option 3

- A variation on option 2 would be to identify those countries with some or all of the required infrastructure and develop databases in these countries prior to dissemination of the database across the region. For Option 3 activities would take part in two parts: first dealing with 3-4 countries; and the second part covering the remainder